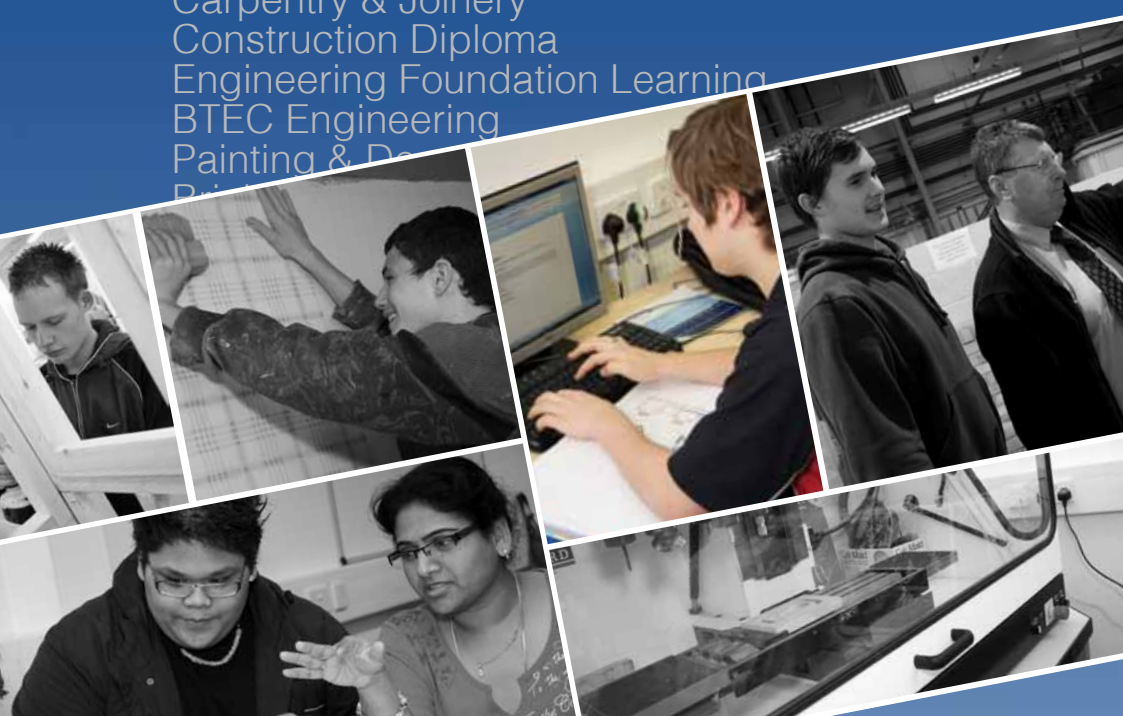


2012

Courses Prospectus

- ▶ **Engineering**
- Carpentry & Joinery**
- Construction Diploma**
- Engineering Foundation Learning**
- BTEC Engineering**
- Painting & Decorating**
- Bricklaying**
- Construction Foundation Learning**

Engineering
Carpentry & Joinery
Construction Diploma
Engineering Foundation Learning
BTEC Engineering
Painting & Decorating
Bricklaying



Specialists in Construction and Engineering Training and Apprenticeships



Welcome

02 A note from our Chief Executive

About Prospects College

03 Why Choose Prospects?
04 About Prospects College
05 Starting at Prospects College
06 Student Feedback

Engineering

07 Courses
08 Student Profiles
09 A Career in Engineering
10 Engineering Progressions Ladder
11 Engineering Foundation Learning Programme
12 Introductory Course in Engineering
13 BTEC First Diploma in Engineering Level 2
14 BTEC National Certificate in Engineering Level 3

Construction

15 Courses
16 Student Profiles
17 A Career in Construction
18 Construction Progression Ladder
19 Construction Foundation Learning Programme
20 Diploma in Construction Level 1 – Bricklaying
20 Diploma in Construction Level 1 – Carpentry & Joinery
20 Diploma in Construction Level 1 – Painting & Decorating
21 Diploma in Construction Level 2 – Bricklaying
21 Diploma in Construction Level 2 – Site Carpentry

Further Information

22 Policies & Procedures
24 Support for Learning
25 Other Courses
26 Can I obtain training towards my studies?
27 Map – Sites in Basildon
28 Map – Site at Southend Airport
29 Map – Futures Community College

A note from our Chief Executive

► Welcome



Neil Bates Chief Executive

If you are interested in a career in either the Construction, Engineering, Marine or Aviation industry then a Prospects College course could be the perfect start for you.

You will train in one of our modern skills training centres and you will develop your practical skills whilst working towards an industry recognised professional qualification. We are very proud of our superb skills centres where you will find an excellent standard of equipment and experienced, well qualified staff.

And the great news is that when you study at a Prospects centre, not only will we help you to find employment in the industry, we will also introduce you to Engineering and Construction businesses who are willing to sponsor you through to completion of your apprenticeship. As an employed apprentice you really will be able to Work, Earn and Learn all at the same time. Last year more than 300 Prospects students were found engineering and construction apprenticeships with local employers. In the same year the pass rate for the A Level equivalent Level 3 Engineering Advanced Apprenticeship exceeded 90%, making Prospects one of the most successful colleges in the country.

In all areas of the college pass rates were well in excess of the national average. At the recent Ofsted inspection, all curriculum areas at the college were judged to be good and inspectors considered some parts of the college to be 'outstanding'.

You can be very confident that completing your apprenticeship with Prospects gives you a very good chance indeed of achieving your qualification and gaining employment.

So if you want to be a carpenter, electrician, bricklayer, decorator, plumber, engineer or a welder, Prospects College is the place for you.

Neil Bates

Chief Executive

Why Choose Prospects? ◀

Introducing Prospects Learning Foundation

Building on the firm foundation established over four decades of providing technical skills training in South East Essex, Prospects Learning Foundation is now one of the largest learning and skills providers in Essex and is well placed to look to the future with confidence and with an ambition to do more.

Our mission is focused on promoting and delivering world class learning and skills, meeting the needs of our local community and supporting economic wellbeing, regeneration and community cohesion.

The Foundation delivers education and skills programmes directly and is also a sponsor and commissioner of services which contributes to meeting the charities objects. Much of this work is carried out by the Foundation's wholly owned subsidiary operating companies, Prospects College and Prospects Training Solutions, or through its sponsorship of Trust Schools and Vocational Centres.

With Charity Commission approval the Foundation has broadened its objects to establish new technical training centres, to sponsor more Trust Schools, to enter new partnerships and joint ventures in response to local need, to undertake and publish research in the area of education, learning and skills, and to offer assistance to individuals and organisations who might benefit from the Foundation's work.

Guided by its mission the Foundation is now planning for the future, energised by the possibilities and mobilised by the needs of our community.



► **Prospects College**

About Prospects College

Prospects College delivers training at its 6 sites located along the Thames Gateway South Essex corridor. We provide apprenticeships, further education, foundation learning skills and education at our facilities in Southend, Basildon and Brentwood.

The college specialises in the delivery of vocational skills and training required for the vital economic sectors of Construction and the Built Environment and Engineering and Manufacturing.

Why choose Prospects College?

Because we are the best and we produce the best. Look at these statistics:

All course success rates meet the national averages and some exceed them. In September 2008 a successful Ofsted inspection recorded that "Prospects College provides excellent learning environments, good support for students and good overall success rates college-wide". College retention rates average over 81% year on year. Student surveys show that 98% of students are satisfied with their course.

Our instructors are the best:

All vocational instructors are recruited from industry and non-vocational instructors have a wealth of experience from Further Education. Each vocational instructor has a minimum of five years relevant trade experience and has achieved at the very least a City and Guilds Advanced Craft Level or NVQ3. Instructors also have teaching and assessor qualifications.

Our students get the best support:

As soon as a student starts, he or she will be allocated to one specific instructor who is then responsible for him/her throughout his/her time at the college. The instructor monitors the student's progress and will arrange for learning support sessions if they are thought to be necessary. The Attendance and Retention Officer monitors attendance and punctuality. There is a complaints procedure to ensure that issues raised are dealt with promptly and appropriately.



Starting at Prospects College

Starting at Prospects College

After a successful interview, your first week at college will consist of a thorough induction to your chosen course and the college environment. This will provide an opportunity for you to meet your tutors, become familiar with the new working environment and understand what will be required of you. This is also the time to ask questions relating to your course.

Courses Explained

Apprenticeships

Apprenticeships rely on students being employed. These courses run at Level 2 (apprenticeship) and Level 3 (advanced apprenticeship). Students attend college for 1 day per week and work for 4 days. Sometimes students attend college for a block of 5 days in order to achieve a specific unit of learning. The length of these courses varies from 12 to 36 months.

Prospects College works with Prospects Training Solutions to recruit students and engage with employers. For more information on apprenticeship opportunities please see the Prospects Training Solutions prospectus.

Further Education Learning

These courses are either full time for 6 months (5 days a week) or part time for a year (2 days a week). Students will gain a technical qualification at Level 1, 2 or 3 together with Functional Skills qualifications. Successful students can progress to the next level of the qualification or move to study on a pre-apprentice or work based learning programme.

Foundation Learning

These courses are suitable for young people who do not have any relevant qualifications in construction/engineering and who have missed out on some earlier education. The course gives learners the opportunity to develop vocational skills whilst gaining Functional and Employability Skills qualifications. This course serves as a base from which students can progress to further education or work based learning training programmes. Attendance depends on the vocational area chosen but usually students attend for 3 days a week for 6 months.



"Everyone gets treated like adults. A lot of practical work which is fun, there is a good atmosphere in my class and everyone helps each other with the theory and practical aspects of the course".

"I have always wanted to learn a trade and at school there was no opportunity to do so. Prospects College has a wide range of trades to choose from. I really enjoy the practical side of the course and the tutors are very helpful".

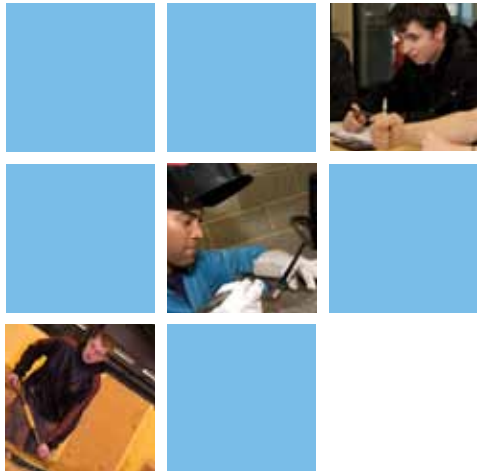
"I am really enjoying my painting and decorating course. The tools and equipment at the college are in good condition and are easy to use".

"I decided to study at Prospects College as I wanted to be a carpenter. The instructors are very helpful and knowledgeable and I am learning a lot of new skills".

"I really enjoy both the course and college life. I am grateful to my tutor for all the help, support and understanding she has given to me".

"The people that work at Prospects College talk a lot of sense and the tutors really help you. If I did not come to Prospects and get this opportunity I would probably be in a job, just trying to earn a living, maybe labouring but not having any skills. It's your life and you only get one chance".

"I love engineering due to the science elements, being innovated and looking at aspects of instruments that others may overlook and improving those techniques; the course I am studying at Prospects is teaching me all this and much more".



Engineering Courses



- ▶ **Foundation Learning**
- ▶ **Introductory Course**
- ▶ **First Diploma**
- ▶ **National Certificate**

Student Profile

▶ Joe Clark



Level 1 BTEC Introductory
Diploma in Engineering

Joe attended Castle View School in Canvey Island, and achieved 4 GCSEs. At school he really enjoyed the practical lessons and knew he did not want to study A Levels when he left.

He first heard about the Prospects College through his mum showing him the website. Joe looked through all the courses on offer and thought engineering would be a good career to get into. He decided to enrol onto a Level 1 Introductory Diploma in Engineering to get an overview of engineering as this would aid him progressing onto a level 2 course.

Joe is really enjoying the course and says “the tutors provide very good support and always go through everything thoroughly to make sure everyone understands”. He also finds that it is a different learning atmosphere compared to what he is used to and finds this beneficial when it comes to getting along with his fellow learners.

Student Profile

Samantha Coats ◀



Level 3 BTEC
Engineering

Samantha attended St Clare's School in Stanford-Le-Hope and achieved 5 A*- C grade GCSEs. Samantha had no idea what she wanted to do when she left school. She did not really want to study A Levels and she wanted to find a course that was more hands on. Samantha decided to attend some college open evenings to see what types of courses were available.

She attended Prospects College open evening in Basildon and liked the idea of studying a course in Engineering. Samantha came in for an interview and soon started on a Level 2 Engineering course. At first she was worried she would not fit in as she was the only girl in her class but the boys made her feel very welcome and helped her out whenever she got stuck. Within a year Samantha completed the course and decided she wanted to further her skills and knowledge in Engineering and enrolled onto a BTEC Level 3 Engineering course attending 3 days a week. Samantha said the tutors are very helpful and she is really enjoying the course.

Engineering

A career in Engineering

A career in Engineering

Modern living depends on engineering design, production and improvement. Lighting, heating, trains, aircraft, TV, radio, buildings, mobile phones, computer games and more recent developments such as iPods are all produced by engineers.

Which area can I work in?

There are many different types of engineering – each offering a variety of jobs:

Engineering technicians

Engineering technicians solve technical problems in manufacturing, sales, construction, inspection and maintenance by using engineering and scientific principles. They work at all stages of machinery use from installation to continuous operation and at all levels they assist engineers and scientists.



Manufacturing engineering

Mostly working in industries that produce things. Engineers design, build and maintain all the systems in factories, including automated and computer-controlled machines.

Mechanical engineering

Designing and making the parts of machines that move. These range from children's bikes to rockets that transport astronauts to the moon and everything in between!

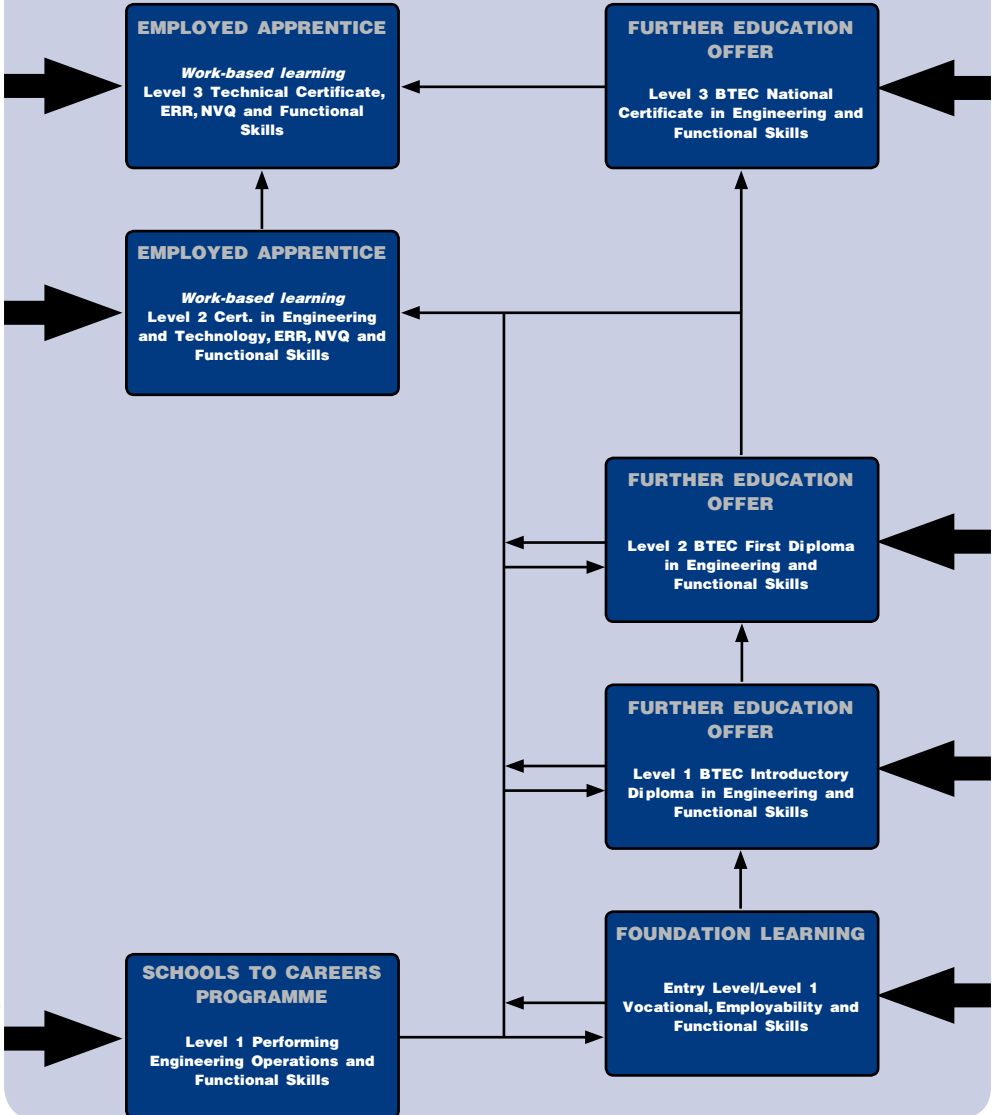


Engineers are very versatile and also work across a range of other disciplines, including agriculture, marine, energy, civil, electrical engineering and electronic engineering. Engineering is a profession for practical and academic people. There are opportunities for good salaries and for working abroad, as engineering is a global profession. Engineers might also have the chance to invent machinery, gadgets and equipment that can make a real difference to the way we live.

► Progression Ladder

Engineering Progression Ladder

Applicants can progress up the ladder or enter at a level appropriate to their needs.



CONTACT US ON: 0800 389 3589

Foundation Learning Programme

What do I need?

Ideally, you should have 2 GCSEs at Grade D-G in English and Maths. Literacy and numeracy skills will be assessed at interview stage and the appropriate Functional Skills programme selected.

What qualification will I receive?

Level 1 NVQ in Engineering, Functional skills in English and Maths at an appropriate level and certificate of progression.

What will I study?

Your initial training will focus on developing a variety of Engineering hand skills, English, Maths and ICT.

How will I be assessed?

The Engineering qualification is assessed through ongoing demonstration of your practical skills. The NVQ element will require a portfolio of evidence. The other qualifications are assessed by a written examination.



Prospects College, Southend and Basildon.



Able and motivated 16-18 year olds, who have an interest in Engineering who may want to progress to a Level 2 programme.



4 days a week for 22 weeks.



LEVEL 1 Performing Engineering Operations

Further training opportunities?

After successful completion of the course you can progress to a level 2 Engineering Programme or Further Education.

How much will it cost?

For 16-18 year olds, this programme is fully funded.



Introductory Course in ▶ Engineering



LEVEL 1

What do I need?

Ideally, you should have 3 GCSEs at Grade E or above including English and Maths. Literacy and numeracy skills will be assessed at interview stage for applicants without these GCSEs.

What qualification will I receive?

Level 1 Introductory Course in Engineering and a Functional Skills qualification in English and Maths.

What will I study?

12 units will be completed, some of which will be mandatory units. These include: Starting Work in Engineering, Working in Engineering and Developing Skills in Engineering.

How will I be assessed?

The course is assessed through individual assignments written by the tutor in accordance with the criteria set by the awarding body. Functional Skills courses are assessed by a final written examination.

Further training opportunities?

After successful completion of the course, progression is possible to a Level 2 BTEC First Diploma in Engineering or a Level 2 apprenticeship programme.

How much will it cost?

For 16-18 year olds, this programme is fully funded.

Delivered on behalf of



Prospects College, Basildon.



Able and motivated 16-18 year olds, who wish to pursue a career in the field of Engineering as a technician.



4 days a week for 35 weeks.

First Diploma in Engineering

What do I need?

Ideally, you should have 4 GCSEs at Grade C - E including English, Maths and Science. Literacy and numeracy skills will be assessed at interview stage for applicants without these GCSEs.

What qualification will I receive?

Level 2 BTEC First Diploma in Engineering and a Functional Skills qualification in English, Maths or ICT.

What will I study?

12 units will be completed, some of which will be mandatory units. These include: Working Practices in Engineering, Using and Interpreting Engineering Information, Applied Electrical and Mechanical Science for Technicians and Mathematics for Engineering Technicians.

How will I be assessed?

This course is assessed through individual assignments written by the tutor in accordance with the criteria set by the awarding body. Functional Skills courses are assessed by a final written examination.



Prospects College, Basildon.



Able and motivated 16-18 year olds, who wish to pursue a career in the field of Engineering as a technician.



2 days a week for 1 year.



LEVEL 2 BTEC

Further training opportunities?

This qualification can lead to a range of further courses in the field of Engineering, including the Level 3 National Certificate and apprenticeships.

How much will it cost?

For 16-18 year olds, this programme is fully funded.

Delivered on behalf of



NEW CAMPUS BASILDON



National Certificate in ▶ Engineering



LEVEL 3 BTEC

What do I need?

Ideally, you should have 5 GCSEs at Grade A* - C including English, Maths and Science. Literacy and numeracy skills will be assessed at interview stage for applicants without these GCSEs.

What qualification will I receive?

Level 3 BTEC National Certificate in Engineering and a Functional Skills qualification in English, Maths or ICT.

What will I study?

12 units will be completed, some of which will be mandatory units. These include: Computer Aided Design, Mechanical Principles and some CNC work. A lengthy Engineering project is a compulsory part of the course.

How will I be assessed?

Assessment will be in three parts: completion of project, assessment of each unit and a written examination. Functional Skills courses are assessed by a final written examination.

Further training opportunities?

After successful completion of the course you can progress to a Foundation Degree in Engineering.

How much will it cost?

For 16-18 year olds, this programme is fully funded.

Delivered on behalf of



Prospects College, Basildon.

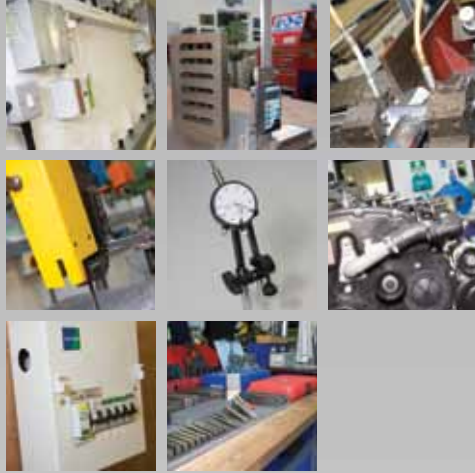


Able and motivated 16-18 year olds, who wish to pursue a career in the field of Engineering as a technician.



2 days a week for 2 years (38 weeks per year).

Construction Courses



- ▶ **Foundation Learning**
- ▶ **Diploma Level 1**
- ▶ **Diploma Level 2**

Student Profile

▶ **Kaylee Game**



Level 1 Diploma
Painting & Decorating

Kaylee attended Shoeburyness High School where she achieved five C-E GCSEs. Kaylee first wanted to become a vet and enrolled on an Animal Science and Welfare course at South Essex College. She soon realised it wasn't for her and looked into painting and decorating as her auntie is in this trade and she thought it would be a good career opportunity.

She went to her local Connexions office to get some advice. They put Kaylee in touch with Prospects College and arranged an interview for her. Soon after she started on an e2e course for a 22 week programme. Kaylee really enjoyed the course and managed to complete 13 units.

She then went onto a Level 1 Diploma in Painting & Decorating attending three days a week. Kaylee really enjoys Prospects College and is hoping to progress on to a Level 2 Diploma to further her skills. Once Kaylee leaves Prospects she hopes to work with her auntie.

Student Profile

Wesley Cullinane ◀

Wesley attended Billericay School and managed to leave with 7 GCSEs A-C Grade. He had no idea what he wanted to do after leaving school. His friend mentioned Prospects College and told him that they specialise in Construction. He liked the idea of working in the construction industry but was not too sure what area to go into. Once he attended an interview at the college he decided Carpentry was the trade that most interested him.

Wesley started on a Level 2 Diploma course in Carpentry attending 3 days a week. He gets along really well with the tutors and the other students in his class. Wesley is trying to find a carpentry employer so he can progress on to the site carpentry Level 2 apprenticeship programme.



Level 2 Diploma
Site Carpentry

A career in Construction ◀

A career in Construction

The construction industry is one of Britain's largest industries employing 1 in 14 people of working age. In 2005, 2.41 million people were employed in construction and this figure is expected to rise to more than 2.8 million by 2011. Over these seven years, this represents an employment increase of 17.5%. To deliver this growth and replace those who will leave the industry over the period, an average of 87,600 new workers will need to be recruited per year.

Choosing a career in construction means choosing a career that will be challenging, exciting and rewarding

The construction industry isn't just about buildings. It's about roads, bridges, tunnels and railways as well as houses, offices, hospitals and schools. Imagine what it would be like without houses, roads or bridges. If there were no cinemas, shops or leisure parks, where would you go to have fun and spend time with friends?

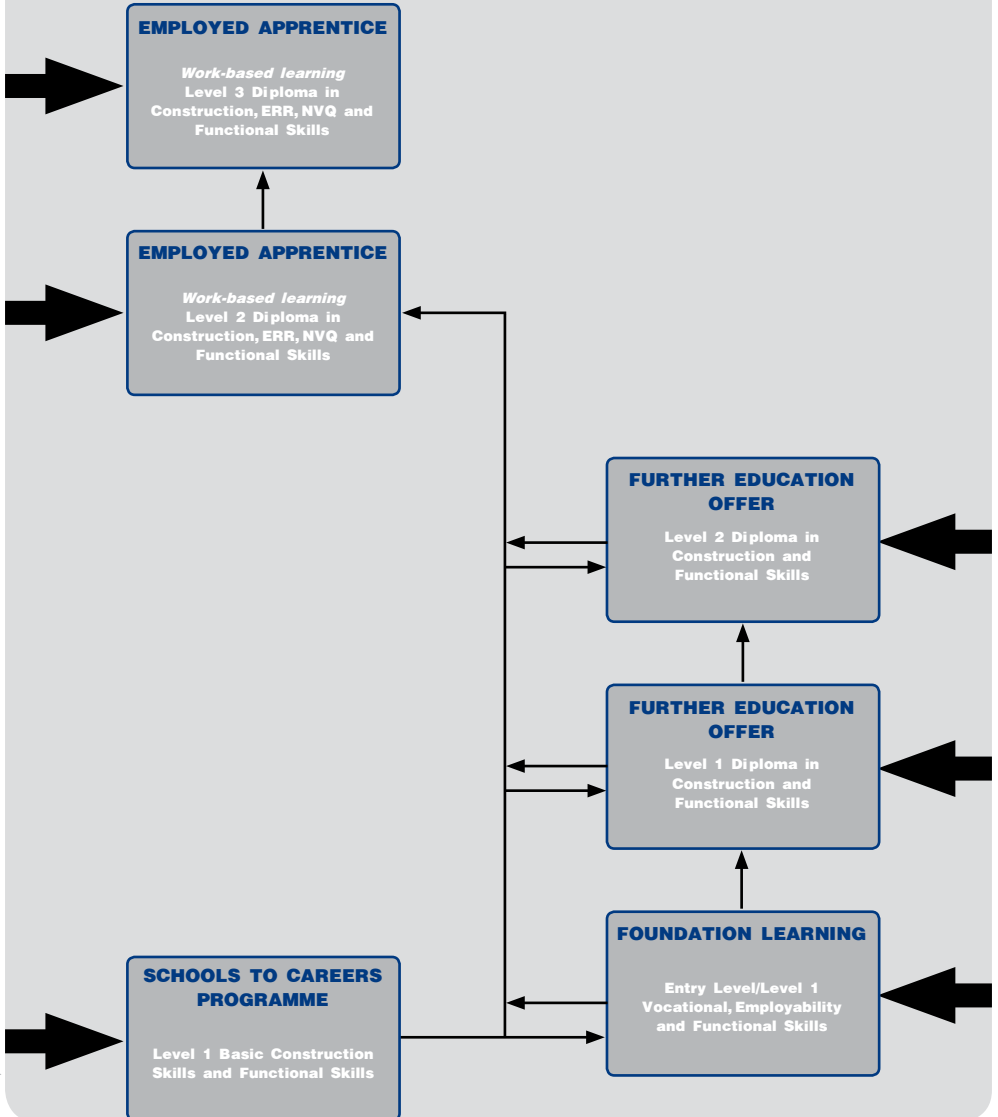
The construction industry isn't just for men. Young women have discovered that it can be a great industry to work in with opportunities to progress. In an industry as big as construction, there are a variety of job roles to consider. Training in the construction trades can lead to successful long term employment and progression into site management, supervision or professional and technical careers such as project management and structural engineering.



► Progression Ladder

Construction Progression Ladder

Applicants can progress up the ladder or enter at a level appropriate to their needs.



CONTACT US ON: 0800 389 3589

Foundation Learning Programme

What do I need?

Ideally, you should have two GCSEs at Grade D - G in English and Maths. Literacy and numeracy skills will be assessed at interview stage for applicants without these GCSEs.

What qualification will I receive?

City & Guilds Award in Employability and Personal Development, Level 1 City & Guilds Certificate Basic Construction Skills and a Functional Skills qualification in English, Maths and ICT. Construction Foundation Learning programme is available in the following areas: Bricklaying, Painting and Decorating and Site Carpentry.

What will I study?

You will combine practical learning in our workshops in two of your chosen vocational areas to achieve the City & Guilds 6218 Basic Construction Skills. You will also be working in a classroom setting to achieve the five units of the Level 1 Award in Employability and Personal Development.



Prospects College, Basildon, Brentwood and Southend.



16-18 year olds who are interested in considering a career within the construction industry and would benefit from developing employability skills alongside practical hands on training.



22 weeks (4 days a week attendance).



LEVEL 1

How will I be assessed?

The Basic Construction Skills qualification is assessed through ongoing demonstration of your practical skills. The Award in Employability and Personal Development is a portfolio based assessment and is ongoing throughout the programme. Functional Skills courses are assessed by a final written examination.

What can I do afterwards?

After successful completion of the course you can progress to a Level 2 Construction programme or Further Education.

How much will it cost?

Eligible students will not have to pay fees.



Diploma in

▶ Construction



LEVEL 1

What do I need?

Ideally, you should have two GCSEs at Grade D (of which one GCSE must be in English or Maths). Literacy and numeracy skills will be assessed at interview stage for applicants without these GCSEs.

What qualification will I receive?

Construction Diploma Level 1 and a Functional Skills qualification in English, Maths and ICT. Level 1 Diploma is available in the following areas: Bricklaying, Carpentry and Joinery and Painting and Decorating.

What will I study?

You will combine practical learning in the workshops with theory sessions. Subjects you will study will include: Construction Health & Safety, Using and Maintaining Hand Tools, Handling and Storing Materials.

How will I be assessed?

Each unit of the qualification is assessed through ongoing demonstration of your practical skills and theory assessments. Some units of the qualification require an online external assessment. Functional Skills courses are assessed by a final written examination.

BRICKLAYING, CARPENTRY & JOINERY OR PAINTING & DECORATING

What can I do afterwards?

After successful completion of the course you can progress to a higher level course at Prospects College or join an apprenticeship scheme when you have gained employment in the industry. You may also wish to consider alternative construction courses delivered by South Essex College.

How much will it cost?

Most students will not have to pay fees. You will however need to buy your own protective footwear and pay a contribution towards material costs.

Delivered on behalf of



Prospects College, Southend or Basildon.



This course is for 16-18 year olds looking for an introduction to the construction industry.



4 days a week for 1 year.

Diploma in Construction

BRICKLAYING OR SITE CARPENTRY

What do I need?

Ideally, you should have a Level 1 Construction Diploma or four GCSEs at Grade C or above (to include English and Maths). Literacy and numeracy skills will be assessed at interview stage for applicants without these GCSEs.

What qualification will I receive?

Construction Diploma Level 2 and a Functional Skills qualification in English, Maths and ICT. Level 2 Diploma in Construction is available in the following areas: Bricklaying and Site Carpentry.

What will I study?

You will combine practical learning in the workshops with theory sessions. Subjects you will study will include: Construction Health & Safety, Using and Maintaining Hand Tools, Handling and Storing Materials, Communication and Estimating Quantities.



Prospects College, Southend or Basildon.



This course is for 16-18 year olds looking for an introduction to the construction industry.



4 days a week for 1 year.



LEVEL 2

How will I be assessed?

Each unit of the qualification is assessed through ongoing demonstration of your practical skills and theory assessments. Some units of the qualification require an online external assessment. Functional Skills courses are assessed by a final written examination.

What can I do afterwards?

After successful completion of the course you can progress to an apprenticeship scheme when you have gained employment in the industry. You may also wish to consider alternative construction courses delivered by South Essex College.

How much will it cost?

Most students will not have to pay fees. You will however need to buy your own protective footwear and pay a contribution towards material costs.

Delivered on behalf of



► Prospects Policies

Equal Opportunities Policy

Prospects College recognises and accepts its responsibility for ensuring equality of opportunity to all students and employees, irrespective of gender, race, creed, religion, age, disability, sexual orientation or gender reassignment.

With our policy in place this means we ensure that:

- You are aware of your rights
- Opportunities for all
- You are respected and treated fairly
- Your environment is safe, supportive and accessible
- You know what to do if you have a problem
- You are helped to succeed and achieve

Anti-bullying Policy

Prospects College is committed to the fair treatment of its students. It considers that bullying or any kind of discrimination is unacceptable and will not be tolerated.

Bullying can be:

- Repeatedly shouting or swearing at someone
- Making threats
- Insulting or name calling
- Ignoring and excluding people
- Picking on someone's differences

Any bullying will be dealt with immediately and may result in students being suspended and ultimately losing their placement at college. If you think you are being bullied or discriminated against or are unhappy with any aspect of your training, contact a member of staff immediately.



Code of Conduct

Respect yourself

Attend regularly and on time

Be fit and able to learn

Take part in all activities and do the best you can

Substance misuse is not acceptable

You are a valued person; don't do anything to take that value away

Respect others

Treat others as you would wish to be treated

Bullying or threatening behaviour is not acceptable

Use language that does not offend others

Students must remain in the working area during lessons

Take into consideration those around you

Show a willingness to learn, listen to instructions and follow them to stay safe

Respect the college environment

Respect the college environment, tools and equipment

The college buildings and property should be treated with care and respect

Keep the learning environment safe

Keep the learning environment clean and tidy

Complaints procedure

If there is an issue that you feel has not been dealt with properly you can make a formal complaint.

The process is as follows:

Pass your complaint to the Quality Manager

You will know we have had the complaint within 48 hours

The complaint will be investigated by a Manager or Director

You will know the outcome of the investigation in 5 days

If you are not happy with the outcome you may appeal



Support for Learning

Support for learning

Prospects College offers all students excellent supported learning throughout their chosen training programme.

How it works

A Basic Skills assessment is completed during an interview and will enable the college to see where support may be appropriate. It will highlight any areas needing support and will be used to ensure students are put on the right course with appropriate support.

An informal interview will be arranged with a Basic Skills Tutor or a Learning Mentor. This will give you the opportunity to discuss any concerns you may have about completing your programme. The tutor will then work with you to build your Individual Learning Plan. This will enable you to complete your course with confidence.

It is important that you take responsibility for your own progress throughout your course. For some students, the training and the style of learning could be totally different from previous experiences. If you are struggling for any reason, ensure you discuss this either with your course tutor or a member of the Student Services team who will be able to assist you.

Open Evenings

We encourage existing and future students and parents, together with employers and partners to visit our college campuses in Basildon and Southend. Regular open evenings are held to allow you to see our facilities, meet tutors and support staff and raise any questions regarding the college and its courses.

Celebrating success

Prospects College, students, staff and employers celebrate success at our annual awards ceremony. We pride ourselves on our continued success in securing full apprenticeships and technical certificates year on year.

Awards in 2010 included:

Student of the Year – Engineering Further Education Programme
Samantha Coates

Student of the Year – Construction Further Education Programme
Faye Smart

Student of the Year – E2E/Foundation Learning
Craig Milbourn

The Chris Parker Award for Outstanding Achievement
Ben Mison



Other Courses ◀

Working with schools

Prospects College delivers vocational training and diploma qualifications for students of school age, years 10 and 11. Our Schools to Careers programmes are available in Construction at Southend, Basildon and Brentwood and Engineering in Basildon. Working alongside the school curriculum, it provides students with qualifications and a route onto either further education or our apprenticeship programmes once they leave school.

Technical Certificates

We deliver a range of technical certificates outside the apprenticeship full framework programme. These are available to students wishing to pursue a chosen career in Engineering or Construction trades. Available at Levels 1-3 they provide an ideal progression route into Further Education.

Other funded training programmes

We work with other training providers to offer students and employers a range of training opportunities. There are often opportunities to train staff under funded schemes from Government or European Social Funding. Speak to our Business Development team to see if there are any schemes currently running which could help you.

Business Training

Prospects Training Solutions delivers a variety of commercial training courses to a range of industry sectors. Should you require bespoke training programmes, Prospects Training Solutions will be happy to assist you. Please contact them on 01268 662440.



Can I obtain funding ► Towards my studies?



Non-employed students may be eligible for EMA.

What does EMA stand for?

Education Maintenance Allowance

What is it?

EMA is a means tested allowance. This means that it is linked to your household income. The level of household income will determine the amount of EMA you receive. Contact Student Services to discuss.

EMA is a 'something for something' training allowance. This means that EMA is paid providing you meet certain terms. The terms will relate to attendance, punctuality and behaviour. For example, if you miss a day at college you will not receive your allowance for that week.

Bonus payments

You will be able to receive bonuses for agreed achievements at college.

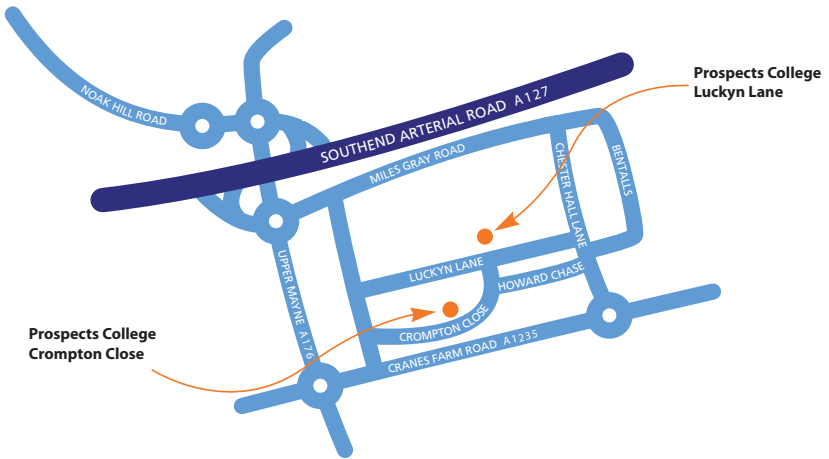
How is EMA paid?

EMA is paid directly into your bank account a week in arrears. It can not be paid into another person's account on your behalf. EMA is not paid by the college.

Travel Expenses

The majority of non-employed students are able to claim for travel expenses to and from college or work placement.



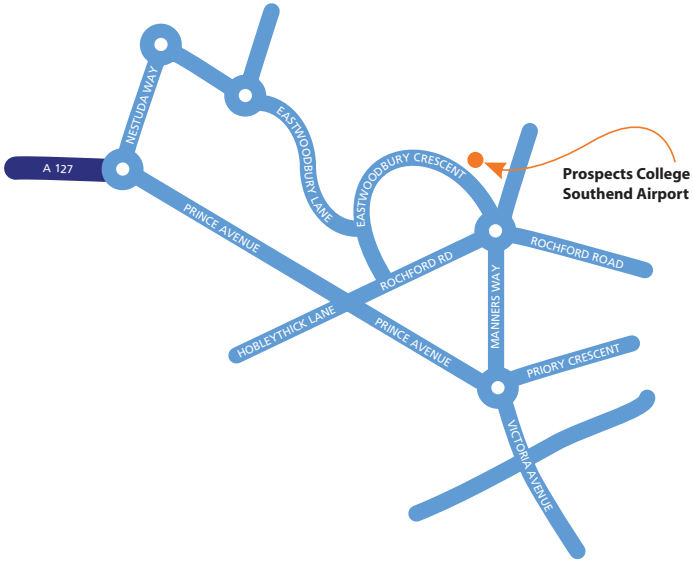


Prospects Training Solutions
Prospects College - Prospects House
Crompton Close, Basildon, Essex. SS14 3AY
T: 01268 662 444
E: enquiries@prospectslf.co.uk
W: www.prospectscollege.com

Prospects College - Prospects House
Luckyn Lane, Basildon, Essex. SS14 3AX
T: 01268 530 263
E: enquiries@prospectslf.co.uk
W: www.prospectscollege.com



▶ Southend Airport

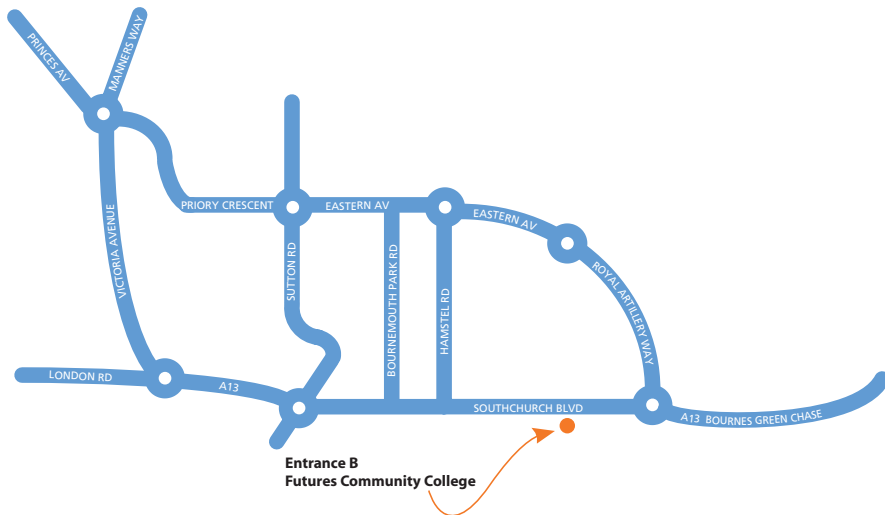


Prospects College
Southend Airport

Prospects College - Aircraft Maintenance Centre
C/O ATC Lashams, Southend Airport, Southend-on-Sea, Essex. SS2 6YF
T: 0800 389 3589
E: enquiries@prospectslf.co.uk
W: www.prospectscollege.com

CONTACT US ON: 0800 389 3589

Prospects College Futures Community College



Prospects Learning Foundation
Futures Community College, Southchurch Boulevard, Southend-on-Sea, Essex. SS2 4UY
T: 01702 391 000
E: enquiries@prospectssf.co.uk
W: www.prospectscollge.com

CONTACT US ON: 0800 389 3589

Prospects COLLEGE



0800 389 3589

0800 389 3589

0800 389 3589



INVESTORS
IN PEOPLE



Working in partnership with:

